



# Open19 LIQUID COOLING

## Unlocking the Power of Cooling: Revolutionizing Data Centers

**ZutaCore's HyperCool<sup>2</sup>**™ direct-on-chip evaporative cooling technology brings a unique combination of self-regulation, on-demand and low-pressure in a single system, making it a good fit for adoption by an Open19 platform. With increasingly powerful CPUs and GPUs pushing the envelope into multi-hundred watts, the HyperCool<sup>2</sup> system addresses server level hotspot and edge computing challenges. The Open19 HyperCool<sup>2</sup> solution is a self-contained system that enables high computing densities as part of the Open19 platform.

### Solution Overview

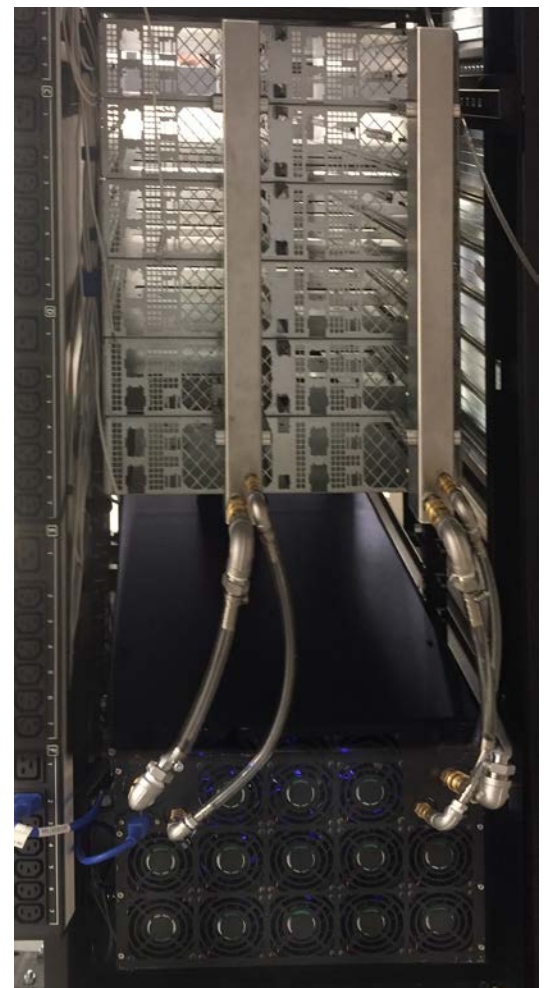
- Rack and cage mounted refrigerant distribution unit (RDU)
- In-rack 6U heat rejection unit (HRU)
- Server kits include the Enhanced Nucleation Evaporator (ENE)

### Your Solution For

- Server hotspots with hundreds of watts per chip
- High computing power density racks
- High performance computing applications

### Benefits

- Improved reliability with mechanical self-regulation and 'hard connects'
- Low-pressure system
- Safe, waterless, non-conductive refrigerant
- Unparalleled heat dissipation
- Ideal for both new deployments and retrofits

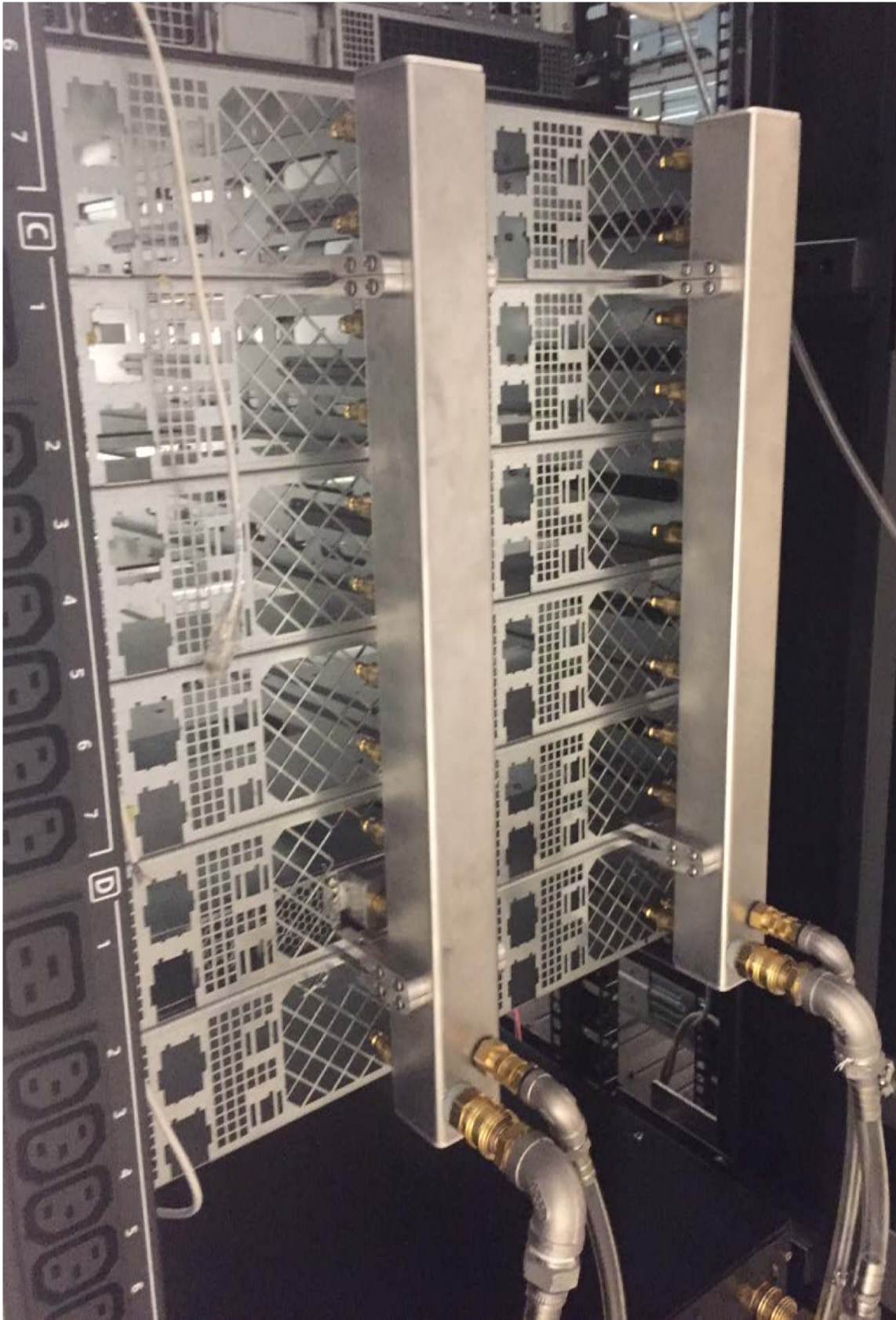


HyperCool<sup>2</sup> System - Rear Access



6U-HRU





Cage mounted RDU